



A MAN POWER TRANSMISSION CO., LTD.

9F-2, No.12, Zhonghua Rd., Yongkang Dist,
Tainan City 710, Taiwan.
Tel: +886-6-3113166
Fax: +886-6-3128266
E-mail: sales@amgroup.tw



Motorcycle Chain



www.amgroup.tw



ICONS DESCRIPTION



Equipped with cross-shaped seal to enhance durability

Cross-Ring



With pin riveting system to increase tensile strength and fatigue resistance

Quad riveting



Designed for on-road use

Road



With heavier plates to increase tensile strength

Heavy Duty



With advanced heat treatment to reduce chain weight

Light Weight



During operation with low noise

Noiseless



Equipped with specially processed pin to increase wear resistance

SP Pin



Equipped with solid bushing to upgrade fatigue resistance

Solid Bush

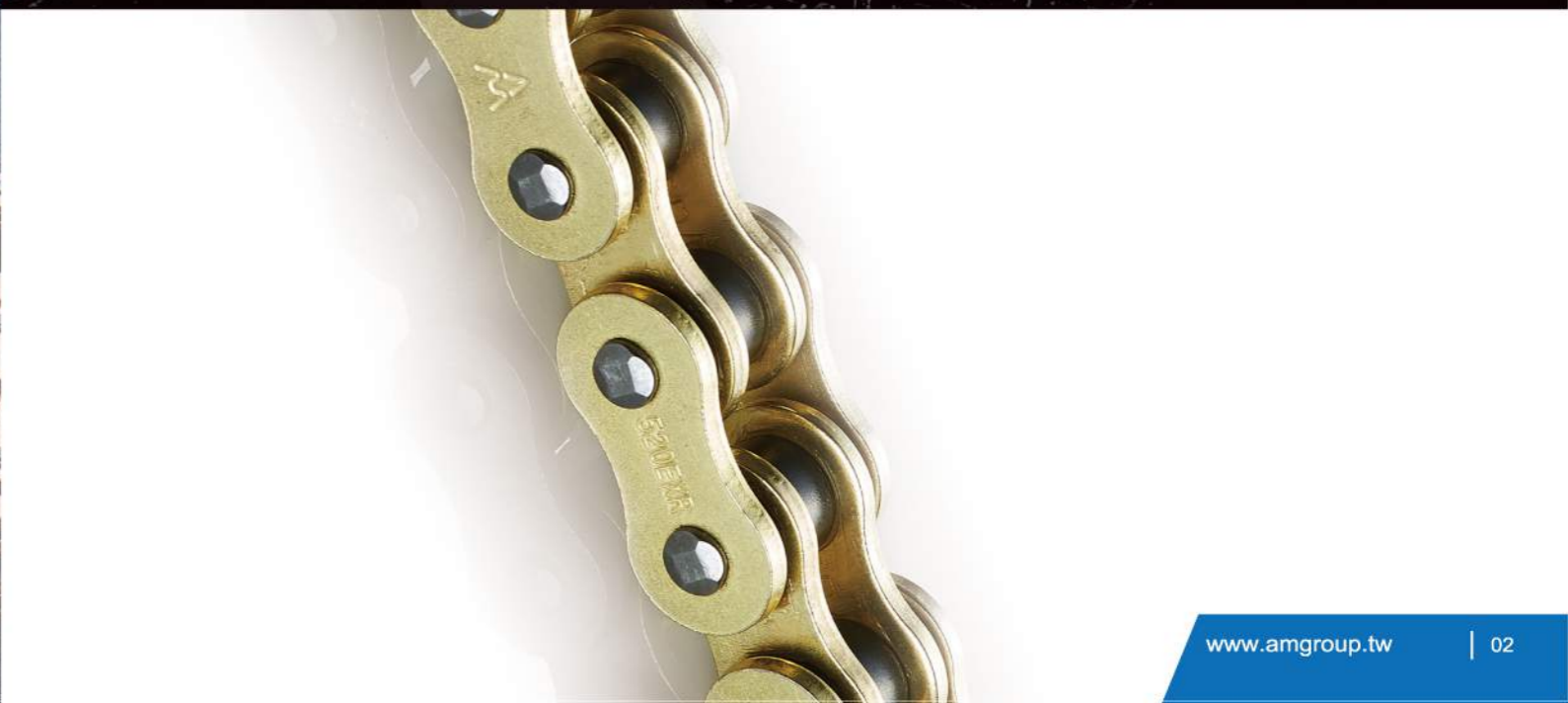


Designed for off-road bikes

Motocross



Model No.	Cross Ring	SP Pin	Solid Bushing	Light Weight	Heavy Duty	Quad Riveting	Noiseless	On Road	Motocross
520EX	●		●		●	●		●	
525EX	●		●		●	●		●	
530EX	●		●		●	●		●	
520EXR	●		●		●	●		●	
525EXR	●		●		●	●		●	
420DX		●	●					●	●
428DX		●	●			●		●	●
520DX		●	●			●		●	●
428HD			Special Bushing			●		●	
428HHD			Special Bushing			●		●	
2045LN-96		●		●	●		●		
2034LN-98		●		●	●		●		
2045LN-98		●		●	●		●		





CROSS-RING CHAIN

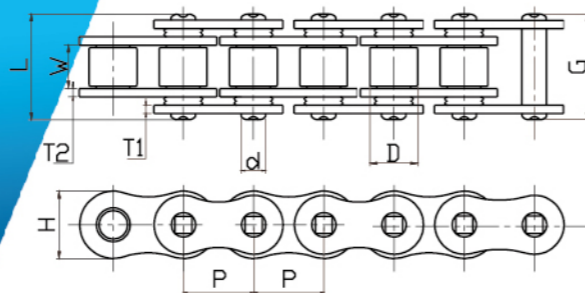
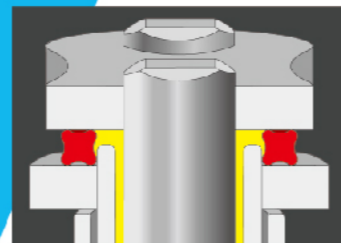
In chain manufacture, outstanding metal finished products result from skilled engineering of heat treatment.

In AM Cross Ring chain series, it is adopted the world-class level of heat treatment technology to enhance chain strength and durability.

In addition, newly developed grease is well-retained between solid bushing and hardened pin to achieve the best operation condition.

The special cross-shaped ring stops grease to vanish over time, so lubrication lasts longer to constantly reduce friction damage. The above features lead to AM Cross Ring chain outperform the O-ring chain products.

AM Cross Ring chain stay with you to conquer the most severe and harsh condition and enjoy every riding moment.



Specification

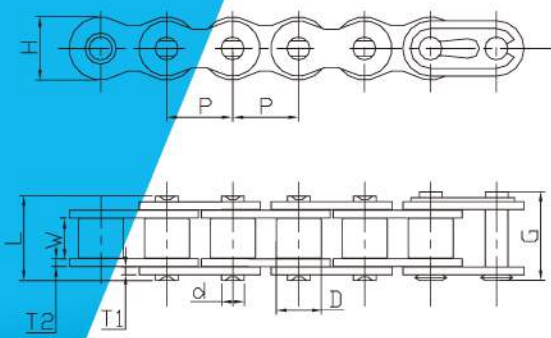
Model No.	Pitch	Roller Link Width (Min)	Roller Dia. (Max)	Pin Link Plate Thickness	Inner Link Plate Thickness	Inner Link Plate Height	Pin Dia.	Overall Width Riv.	Overall Width Con.	Minimum Tensile Strength	Average Tensile Strength	Displacement Application (Max)
	P	W	D	T1	T2	H	d	L	G	/	/	cc
Unit	mm	mm	mm	mm	mm	mm	mm	mm	mm	kgf	kgf	cc
428EX	12.700	7.85	8.55	2.0	2.0	12.10	5.00	21.40	21.40	3000	3200	400
520EX	15.875	6.25	10.16	2.2	2.2	14.70	5.25	20.65	20.65	3600	3800	600
525EX	15.875	7.85	10.16	2.2	2.2	14.70	5.25	22.35	22.35	3900	4200	900
530EX	15.875	9.40	10.16	2.4	2.4	15.25	5.35	24.70	24.70	4500	4700	1000
520EXR	15.875	6.25	10.22	2.2	2.2	14.80	5.25	20.70	22.20	3900	4200	1000
525EXR	15.875	7.85	10.32	2.6	2.4	15.40	5.50	23.60	25.00	4200	4500	1200



Motocross Chain



For off-road application, chain should be promoted with upgraded steel alloy for all parts, subjects to going through exclusive heat-treating process as well, to remarkably reinforce its toughness against rugged terrain riding. AM employs chromized pin and solid bushing into this chain to boost up its wear endurance and shock absorption. Its outstanding performance does help inviting enjoyment and excitement to cyclist while going extreme.



Specification

Model No.	Pitch	Roller Link Width (Min)	Roller Dia. (Max)	Link Plate Thickness	Link Plate Thickness	Link Plate Height(Max)	Pin Dia. (Max)	Overall Width Riv. (Max)	Overall Width Con. (Max)	Minimum Tensile Strength	Average Tensile Strength	Displacement Application (Max)
Unit	mm	mm	mm	mm	mm	mm	mm	mm	mm	kgf	kgf	cc
420DX	12.7	6.25	7.77	1.8	1.8	11.8	3.95	16.25	17.70	2100	2350	125
428DX	12.7	7.85	8.51	2.0	2.0	11.9	4.51	18.80	20.00	2500	3000	150
520DX	15.875	6.25	10.16	2.0	2.0	14.85	5.14	17.35	19.35	3500	3950	450



AM 428HD

Durability is 55% more than regular 428H.

Patented bush increases life time of transmission system. Special design of outer plate that keeps grease inside to enhance lubrication between components.

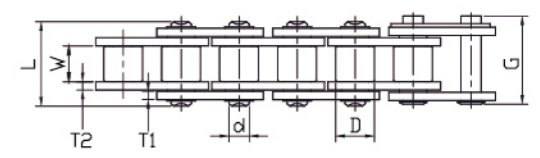
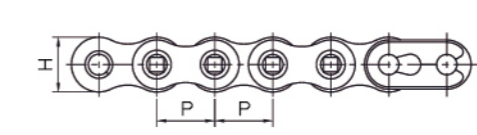


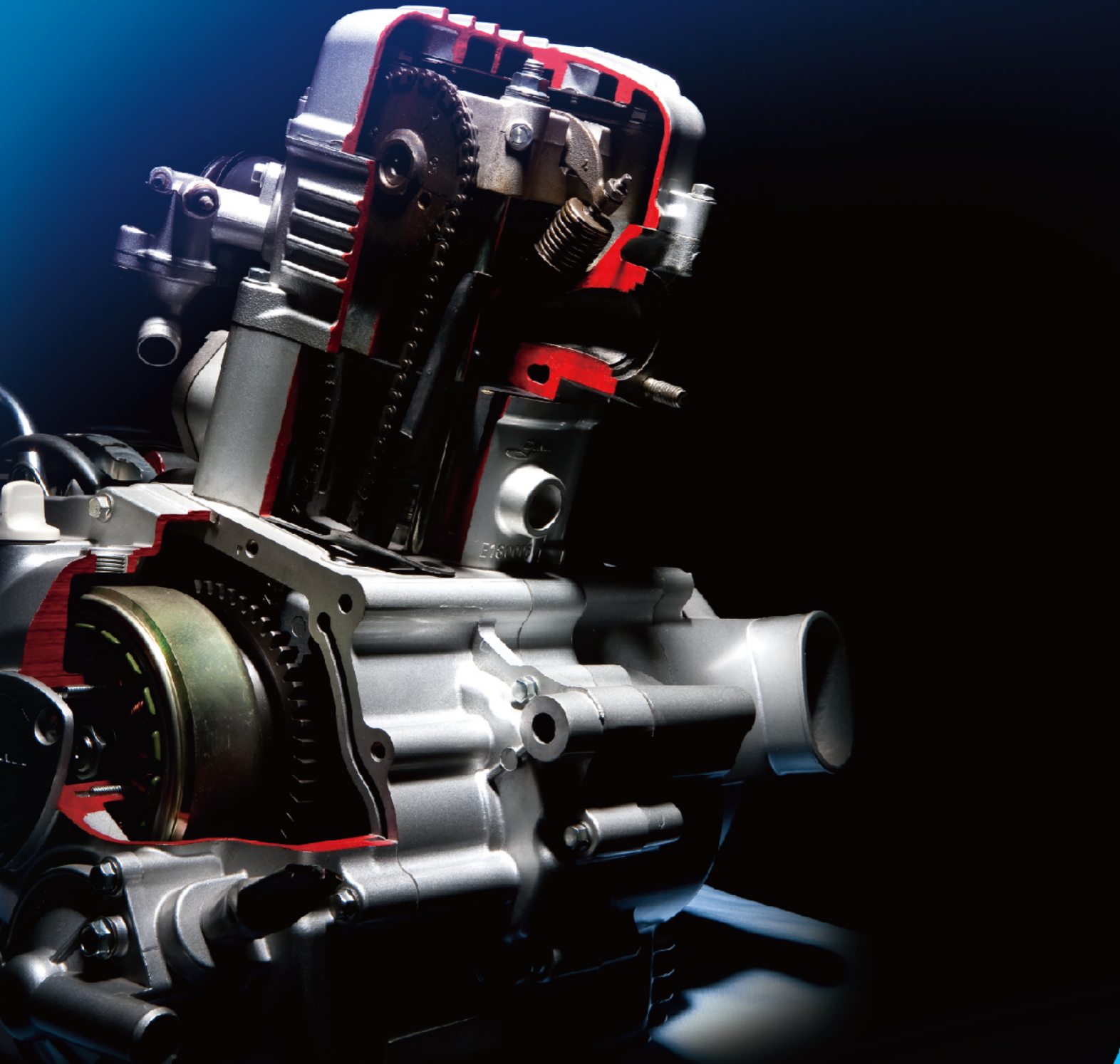
High Durability



Specification

Model No.	Pitch	Roller Link Width (Min)	Roller Dia. (Max)	Link Plate Thickness	Link Plate Thickness	Link Plate Height(Max)	Pin Dia. (Max)	Overall Width Riv. (Max)	Overall Width Con. (Max)	Minimum Tensile Strength	Average Tensile Strength	Displacement Application (Max)
	P	W	D	T1	T2	H	d	L	G	/	/	cc
Unit	mm	mm	mm	mm	mm	mm	mm	mm	mm	kgf	kgf	cc
428HD	12.70	7.85	8.51	1.80	1.80	12.00	4.45	18.20	19.25	2100	2300	150
428HHD	12.70	7.85	8.51	2.00	2.00	12.00	4.45	18.85	20.30	2200	2450	180





SILENT CHAIN

This series is precisely fabricated with higher grade of alloy steels and exclusive heat treatment for engine timing application.

With advanced stamping method on link plates, it optimizes the contact area with sprocket and largely decreases chain stretch because of excellent friction resistance.

Of course, the operation noise is dramatically lowered at the same time.

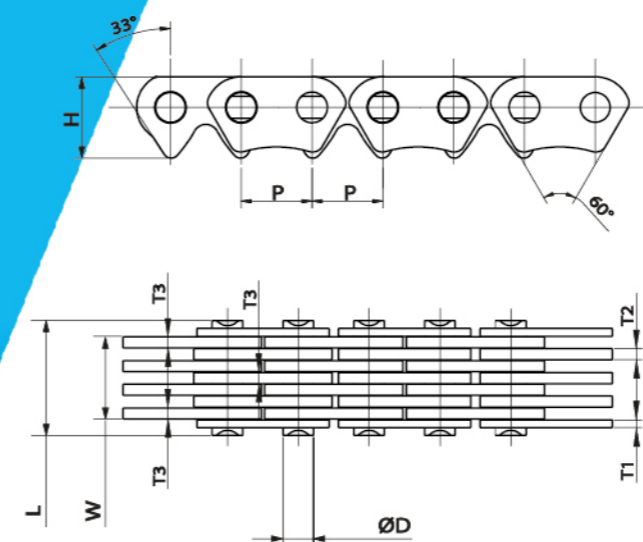
The integrated properties of AM silent chain qualify itself as the best option for smooth engaging mechanism and minimum energy loss in power transmission.



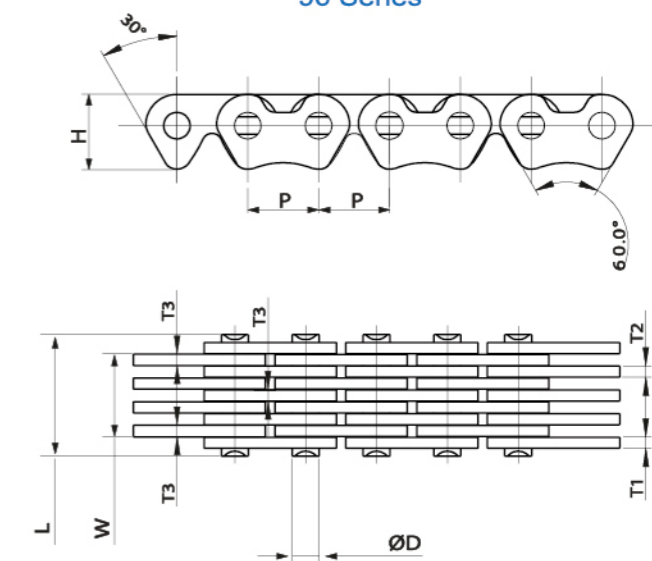
Specification

Model No.	Pitch	Inner Link Width (Min)	Pin Dia.	Overall width Riv.	Inner Plate Height	Outer Plate Thickness	Inner Plate Thickness	Middle Plate Thickness	Minimum Tensile Strength	Average Tensile Strength
	P	W	D	L	H	T1	T2	T3	/	/
Unit	mm	mm	mm	mm	mm	mm	mm	mm	kgf	kgf
2034LN-98	6.35	5.10	2.72	8.30	7.35	0.70	1.00	1.00	800	950
2045LN-98	6.35	7.15	2.72	10.35	7.35	0.70	1.00	1.00	1050	1350
2045LN-96	6.35	9.05	2.42	10.60	6.75	0.70	1.00	1.22	1050	1400

98 Series



96 Series





ChainMate

AM ChainMate is the perfect hand tool which is specially designed for user's cutting, riveting and assembling the sealed chains.



Note