



KMC POWER TRANSMISSION CO., LTD.

AGRICULTURAL CHAIN



KMC is an ISO 9001 Certified Roller Chain Manufacturer



Certified by International Quality Control Systems which granted products credibility



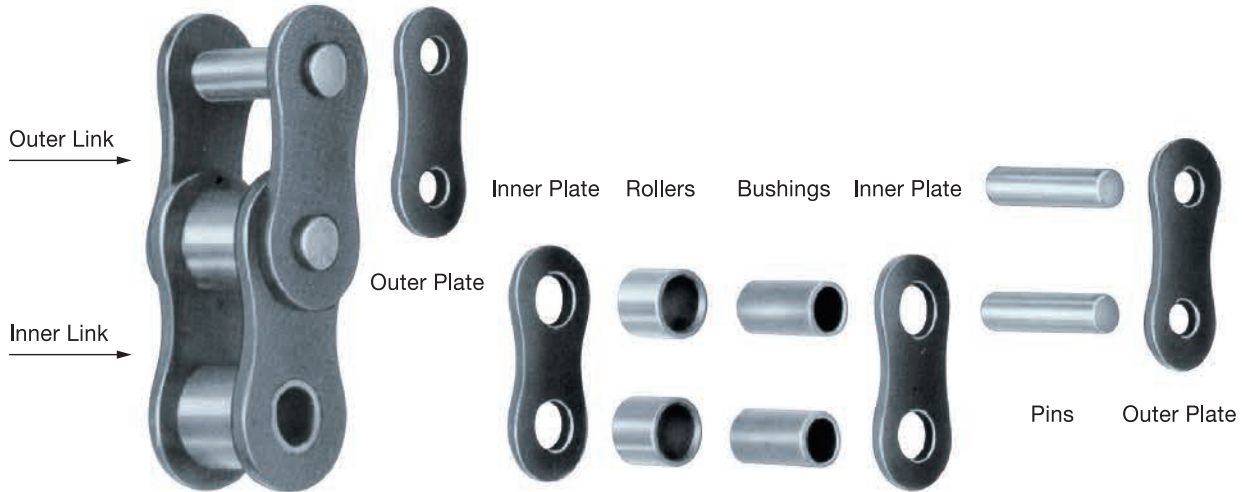
Recommended certificate of high-quality products

KMC also strives to maintain its world recognized quality assurance system for stable supply of quality products, which exceeds the expectations of our noblest customers.

KMC CHAIN GROWING HISTORY

1977	<p>Kuei-Meng Ind. Co., Ltd. was established in Yongkang, Tainan, Taiwan.</p> <ul style="list-style-type: none"> · The 1st plant of KMC Group. · KMC started manufacturing bicycle chain.
1982	<p>KMC started manufacturing motorcycle chain and industrial chain.</p>
1984	<p>KMC Chain Ind. Co., Ltd. was established in Xinhua, Tainan, Taiwan.</p> <ul style="list-style-type: none"> · The 2nd plant of KMC Group.
1986	<p>Launched technical cooperation with Shimano Inc., Japan in developing superior bushless bicycle chain series.</p>
1989	<p>Transton Chain (Shenzhen) Co., Ltd. was established in Shenzhen, Guangdong, China.</p> <ul style="list-style-type: none"> · The 3rd plant of KMC Group. · The first oversea factory in China, producing bicycle and motorcycle chain. · Invest in raw material supplier Kao-Meng Co., Ltd.-in Taiwan and China. · Enter China domestic market
1990	<p>KMC Chain (Shenzhen) Co., Ltd. was established in Shenzhen, Guangdong, China.</p> <ul style="list-style-type: none"> · The 4th plant of KMC Group. · Worldwide market share of bicycle chain grew to 40%.
1991	<p>KMC (USA) & warehouse was established in California, USA.</p> <ul style="list-style-type: none"> · Provide logistics support & services to American customers. · KMC Chain (Hong Kong) Co., Ltd. was established in Hong Kong. · Provide logistics support & services to overseas customers.
1992	<p>Invested in Prowheel Co., a sprocket maker for bicycle and motorcycle.</p>
1994	<p>Started manufacturing industrial chain in China.</p>
1995	<p>KMC (Taiwan) Ind. Co., Ltd. and KMC Chain (Shenzhen) Co., certified by ISO-9002.</p>
1996	<p>KMC Chain (Taicang) Co., Ltd. was established in Taicang, Jiangsu, China.</p> <ul style="list-style-type: none"> · The 5th plant of KMC Group. <p>KMC Chain Europe B.V. was established in the Netherlands. Started manufacturing motorcycle's engine timing chain in China.</p>
1998	<p>Ellson Motorcycle Parts (Shenzhen) Co., Ltd. was established in Shenzhen, Guangdong, China.</p> <ul style="list-style-type: none"> · To handle sales of motorcycle components.
1999	<p>AMC Chain (Shenzhen) Co., Ltd. was established in Shenzhen, Guangdong, China.</p> <ul style="list-style-type: none"> · The 6th plant of KMC Group. · To handle increasing sales of motorcycle chain. <p>KMC Chain (Taicang) Co., Ltd. certified by ISO 9002.</p>
2000	<p>KMC (Europe) warehouse was set up in Heerenveen, The Netherlands.</p> <ul style="list-style-type: none"> · Provide logistics support & services to European customers.
2001	<p>KMC Chain (Vietnam) Co., Ltd. was established in Bien Hoa, Dong Nai, Vietnam.</p> <ul style="list-style-type: none"> · The 7th plant of KMC Group and the 1st factory in ASEAN, producing bicycle chain and motorcycle chain to launch into the business of South-East Asia. · KMC Chain (Shenzhen) Co., Ltd. and Transton Chain (Shenzhen) Co., Ltd. certified by ISO 9001-2000.
2002	<p>KMC Transmission (Shanghai) Co., Ltd. was established in Taicang, Jiangsu, China.</p> <ul style="list-style-type: none"> · The 8th plant of KMC Group KMC Chain (Vietnam) Co., Ltd. and KMC Chain (Taicang) Co., Ltd. certified by ISO 9001:2002 <p>Started manufacturing automotive engine timing system in KMC (Shenzhen) Started manufacturing motorcycle driving sprocket in KMC (Vietnam) Set up liaison office in Thailand.</p>
2003	<p>Door opener Chain & Accessories Business Unit was set up.</p> <p>KMC Transmission (Tianjin) Co., Ltd. was established in Tianjin, Hebei, China.</p> <ul style="list-style-type: none"> · The 9th plant of KMC Group. <p>Set up liaison office in Indonesia and Hanoi, Vietnam.</p>
2004	<p>Moduled Inc. was set up and focused on LED lamps, modules and applications.</p> <p>KMC Chain (Shenzhen) Co., Ltd. certified by ISO/ TSI 16949:2002.</p>
2005	<p>KMC Transmission (Chengdu) Co., Ltd. was established in Chengdu, Sichuan, China.</p> <ul style="list-style-type: none"> · The 10th plant of KMC Group.
2006	<p>After an in-house reorganization of KMC Group, AMC Chain Industrial Co., Ltd. was set up to take charge of manufacturing and marketing for motorcycle chain and industrial chain.</p>
2008	<p>KMC donated 2 million yuan in name of Transton Chain (Shenzhen) Co., Ltd. and KMC Chain (Taicang) Co., Ltd. to relieve Sichuan Earthquake.</p>
2010	<p>KMC Group raised capital in expanding Chongqing Transton Chain Co., Ltd.</p> <p>AMC Chain Industrial Co., Ltd. certified ISO 9001:2008 by SGS.</p> <p>KMC Group had a joint venture with SHINMAYWA Industries, Ltd. Japan and established SHINMAYWA Industries, Ltd. Taiwan.</p>
2012	<p>Establish premium AM brand and complete corporate identity system.</p>
2014	<p>KMC power transmission business expanding into sprocket application and development.</p>
2015	<p>Dongguan Transton Chain Co., Ltd. was established in Dongguan, Guangdong, China.</p>
2016	<p>A Man Power Transmission Co., Ltd. certified by ISO 9001-2015.</p> <p>KMC Chain (Taicang) Co., Ltd. certified by Chinese high-tech enterprise certification.</p>

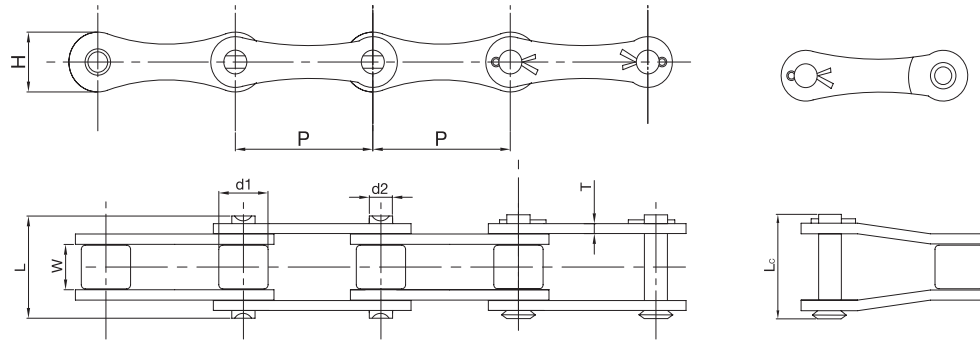
ROLLER CHAIN COMPONENTS & FEATURES



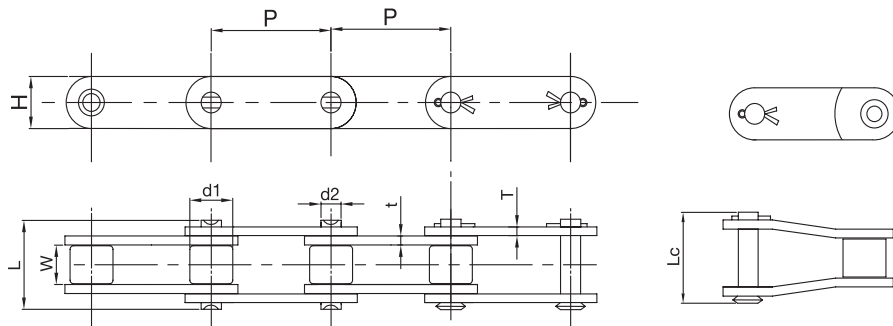
Riveted Chain



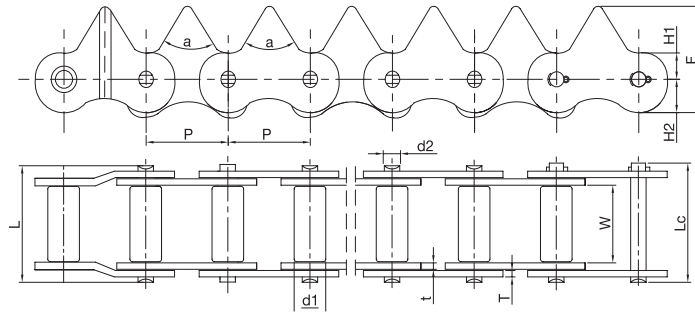
Cotter Chain



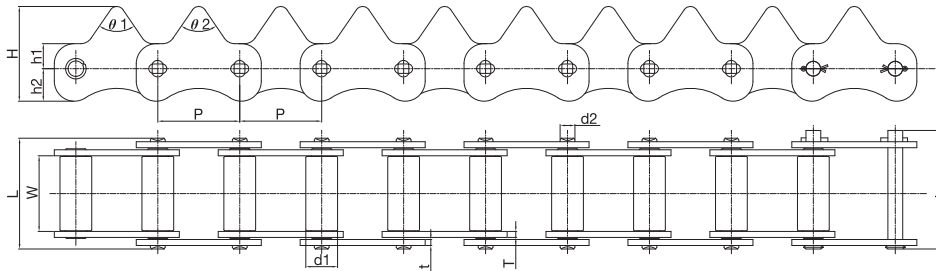
ANSI Chain No	KMC Chain No	Pitch	Roller Link Width	Roller Outer Diameter	Pin Outer Diameter	Pin Length		Link Plate Height	Link Plate Thickness	Minimum Tensile Strength	Average Tensile Strength	Allowed Load
		P	W min	d1 max	d2 max	L max	Lc max	H max	T/t			max
		mm	mm	mm	mm	mm	mm	mm	mm	mm	kgf	kgf
S32	S32	29.21	15.88	11.43	4.47	26.40	28.00	13.40	1.80	2060	2365	210
S38	S38	38.00	22.00	16.00	9.00	39.00	43.00	20.90	3.00	4500	4800	450
S45	S45	41.40	22.23	15.24	5.84	37.70	40.40	17.20	2.80	3000	3440	300
S52	S52	38.10	22.23	15.24	5.84	37.70	40.40	17.20	2.80	3000	3440	300
S55	S55	41.40	22.23	17.78	5.84	37.70	40.40	17.20	2.80	3000	3440	300



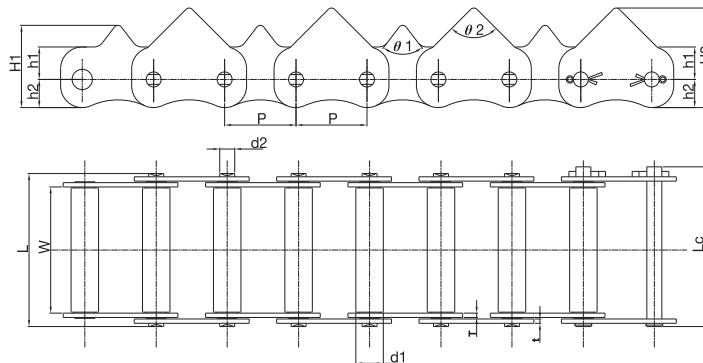
KMC Chain No	Pitch	Roller Link Width	Roller Outer Diameter	Pin Outer Diameter	Pin Length		Link Plate Height	Link Plate Thickness	Minimum Tensile Strength	Average Tensile Strength	Allowed Load
	P	W min	d1 max	d2 max	L max	Lc max	H max	T/t			max
	mm	mm	mm	mm	mm	mm	mm	mm	kgf	kgf	kgf
CA384	38.40	19.00	15.86	8.26	36.00	38.50	22.00	3.00	5800	-	-
CA384HD	38.40	19.00	15.86	8.26	36.00	38.50	22.00	3.00	5800	-	-
CA550	41.40	19.90	16.87	7.19	35.65	38.75	20.20	2.70	4300	5050	430
CA550HD	41.40	19.90	16.87	8.25	37.00	40.00	20.20	3.00	4800	6000	550
CA550VF2	41.40	19.05	16.80	8.28	36.10	41.10	20.20	3.00	5609	6030	560
CA555	41.40	12.70	16.87	7.19	30.10	33.10	20.20	3.20	4800	6030	560
CA557	41.40	20.60	17.80	8.00	37.40	40.60	22.30	3.20	7000	7850	700
CA557HD	41.40	20.60	17.80	8.00	37.40	40.60	22.30	3.20	7000	7850	700
CA620	42.01	24.51	17.91	7.19	41.80	45.20	20.20	3.20	4800	5590	480
CA620M	40.25	24.51	17.91	7.99	41.80	45.20	20.20	3.25	4800	5590	480
CA627	30.00	19.75	15.88	8.28	36.10	31.00	20.50	3.00	5100	5500	510



ANSI Chain No	KMC Chain No	Pitch	Roller Link Width	Roller Outer Diameter	Pin Outer Diameter	Pin Length		Link Plate Height		Link Plate Thickness	Minimum Tensile Strength	Average Tensile Strength	Allowed Load	F	a
		P	W min	d1 max	d2 max	L max	Lc max	H max	H1 max	T/t			max	mm	mm
		mm	mm	mm	mm	mm	mm	mm	mm	mm	kgf	kgf	kgf	mm	mm
	S3325C'	33.00	25.00	12.70	6.35	39.70	42.80	13.00	10.00	2.00/2.50	4500	5000	900	37.80	70°
	S3325C'-31015	33.00	25.00	10.00	5.84	37.70	40.40	13.00	10.00	1.20/1.60	2000	3000	400	38.00	90°

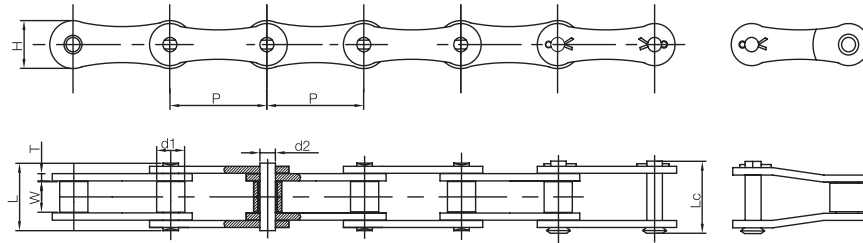


ANSI Chain No	KMC Chain No	Pitch	Roller Link Width	Roller Outer Diameter	Pin Outer Diameter	Pin Length		Link Plate Height			Link Plate Thickness	Minimum Tensile Strength	Average Tensile Strength
		P	W min	d1 max	d2 max	L max	Lc max	h1	h2	H	T/t		
		mm	mm	mm	mm	mm	mm	mm	mm	mm	mm	kgf	kgf
	S3322-63201	33.00	22.00	12.80	5.96	36.50	40.00	10.00	15.00	40.00	2.40	4000	5000
	S3330-74311	33.00	30.00	12.80	5.96	44.50	47.60	10.00	13.00	38.00	2.40	4000	5000



ANSI Chain No	KMC Chain No	Pitch	Roller Link Width	Roller Outer Diameter	Pin Outer Diameter	Pin Length		Link Plate Height				Link Plate Thickness	Minimum Tensile Strength	Average Tensile Strength
		P	W min	d1 max	d2 max	L max	Lc max	h1	h2	H1	H2	T/t		
		mm	mm	mm	mm	mm	mm	mm	mm	mm	mm	mm	kgf	kgf
	3358-74211	33.00	58.00	12.80	7.00	70.90	74.00	15.00	13.00	38.00	46.00	2.00	4000	4500

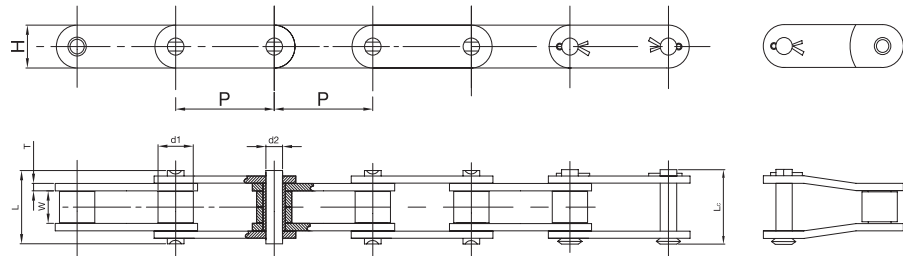
Double Pitch Transmission Roller Chain



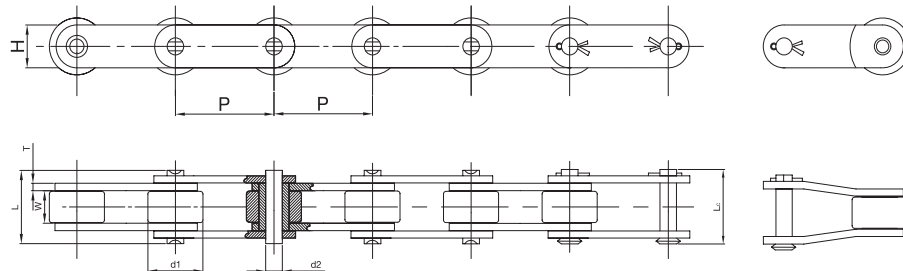
ISO Chain No	ANSI Chain No	KMC Chain No	Pitch	Roller Link Width	Roller Outer Diameter	Pin Outer Diameter	Pin Length		Link Plate Height	Link Plate Thickness	Minimum Tensile Strength	Average Tensile Strength	Allowed Load
			P	W min	d1 max	d2 max	L max	Lc max	H max	T			max
			mm	mm	mm	mm	mm	mm	mm	mm	mm	kgf	kgf
208A	2040	A2040	25.40	7.85	7.92	3.98	17.80	21.00	12.00	1.50	1420	1950	280
210A	2050	A2050	31.75	9.40	10.16	5.09	21.80	25.00	15.00	2.00	2220	3100	450
212A	2060	A2060	38.10	12.58	11.91	5.96	26.90	31.00	18.00	2.35	3190	4200	640

Double Pitch Conveyor Roller Chain

Standard roller chain

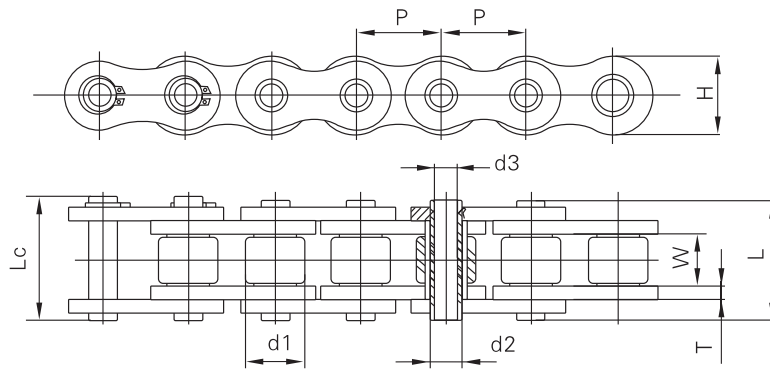


Roller chain with big rollers



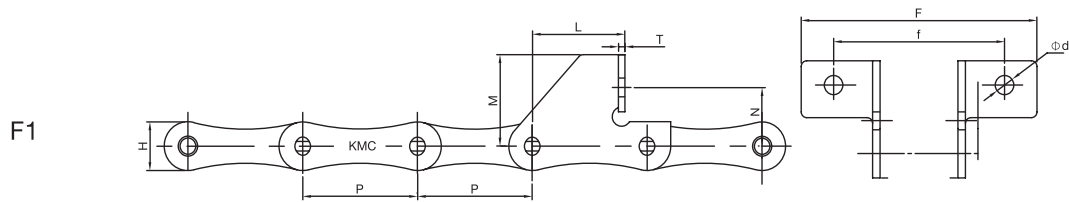
ISO Chain No	ANSI Chain No	KMC Chain No	Pitch	Roller Link Width	Roller Outer Diameter	Pin Outer Diameter	Pin Length		Link Plate Height	Link Plate Thickness	Minimum Tensile Strength	Average Tensile Strength	Allowed Load
			P	W min	d1 max	d2 max	L max	Lc max	H max	T			max
			mm	mm	mm	mm	mm	mm	mm	mm	mm	kgf	kgf
C208A	C2040	C2040	25.40	7.85	7.92	3.98	17.80	21.00	12.00	1.50	1420	1950	280
C208AL	C2042	C2042	25.40	7.85	15.88	3.98	17.80	21.00	12.00	1.50	1420	1950	280
C210A	C2050	C2050	31.75	9.40	10.16	5.09	21.80	25.00	15.00	2.00	2220	3100	450
C210AL	C2052	C2052	31.75	9.40	19.05	5.09	21.80	25.00	15.00	2.00	2220	3100	450
C212AH	C2060H	C2060H	38.10	12.57	11.91	5.96	30.20	34.80	18.00	3.20	3830	4400	640

Hollow Pin Chain



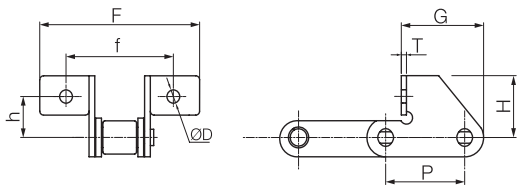
KMC Chain No	Pitch	Roller Link Width	Roller Outer Diameter	Pin Outer Diameter	Pin Outer Diameter	Pin Length		Link Plate Height	Link Plate Thickness	Minimum Tensile Strength	Average Tensile Strength	Allowed Load
	P	W min	d1 max	d2 max	d3 max	L max	Lc max	H max	T			max
	mm	mm	mm	mm	mm	mm	mm	mm	mm	kgf	kgf	kgf
08BHP	12.70	7.75	8.51	6.60	4.50	17.00	19.50	11.80	1.50	950	1100	165
10BHP	15.875	9.65	10.16	7.02	5.13	19.50	20.50	14.70	1.70	1050	1700	255
12BHP	19.05	11.68	15.88	8.09	6.00	22.70	23.90	16.10	1.80	1500	1800	270
40HP	12.70	7.85	7.92	5.63	4.00	16.50	17.60	12.00	1.50	1000	1200	180
50HP	15.875	9.40	10.16	7.03	5.12	20.70	21.90	15.00	2.00	1850	2100	320
60HP	19.05	12.57	11.91	8.31	5.98	25.80	26.80	18.00	2.35	2600	3000	440
80HP	25.40	15.75	15.88	11.40	7.96	32.50	33.80	24.00	3.20	5000	5500	790
C2040HP	25.40	7.85	7.92	5.63	4.00	16.50	17.60	12.00	1.50	1000	1200	180
C2050HP	31.75	9.40	10.16	7.22	5.12	20.70	21.90	15.00	2.00	1850	2100	320
C2060HP	38.10	12.57	11.91	8.31	5.98	25.80	26.80	17.00	2.35	2600	3000	440
C2080HP	50.80	15.75	15.88	11.40	7.96	32.50	33.80	24.00	3.20	5000	5500	790
C2042HP	25.40	7.85	15.88	5.63	4.00	16.50	17.60	12.00	1.50	1000	1200	180
C2052HP	31.75	9.40	19.05	7.22	5.12	20.70	21.90	15.00	2.00	1850	2100	320
C2062HP	38.10	12.57	22.23	8.31	5.98	25.80	26.80	17.00	2.35	2600	3000	440
C2082HP	50.80	15.75	25.58	11.40	7.96	32.50	33.80	24.00	3.20	5000	5500	790
C2082H-HP	50.80	15.75	28.58	11.40	7.96	36.20	37.60	24.00	4.00	5500	6000	870
CT-2HPX	50.80	15.30	38.10	14.28	9.70	36.30	37.60	27.00	4.00	6000	6500	950
CT-2HPA	50.80	15.30	38.10	14.28	9.70	36.30	37.60	27.00	4.00	6000	6500	950

Attachments



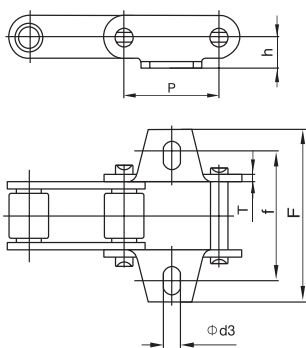
KMC Chain No	P	T	H	M	N	d	F	f	L
	mm	mm	mm	mm	mm	mm	mm	mm	mm
S45-F1	41.40	2.35	17.30	32.00	20.50	6.70	85.00	61.55	33.70
S45(58.0)-F1	41.40	2.35	17.30	32.00	20.00	6.70	85.00	58.00	33.70
S55-F1	41.40	2.35	17.30	32.00	20.50	6.70	85.00	61.55	33.70

F1(61.55)



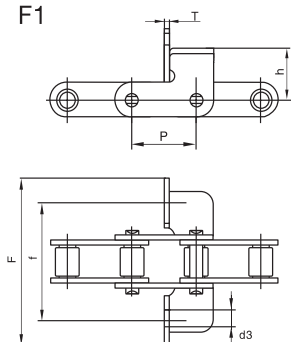
KMC Chain No	P	f	F	h	H	ΦD	G	T
	mm	mm	mm/ max	mm	mm/ max	mm	mm	mm
CA384-F1(61.55)	38.40	52.00	63.00	24.20	34.20	8.30	48.40	3.00
CA550-F1(61.55)	41.40	61.55	85.00	21.40	31.90	6.70	42.85	2.70

K1



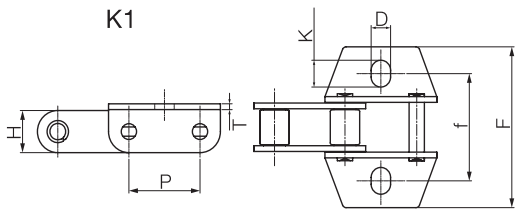
KMC Chain No	P	f	F	h	Φd3	T
	mm	mm	mm	mm	mm	mm
CA550-K1	41.40	54.00	65.00	13.20	8.30	2.70

F1

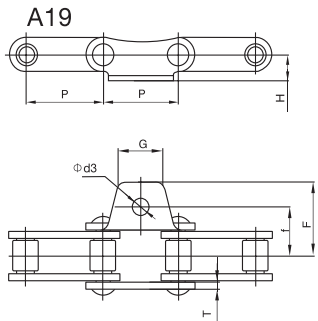


KMC Chain No	P	f	F	d3	h	T
	mm	mm	mm	mm	mm	mm
CA550-F1	41.40	79.40	104.80	8.30	31.80	2.70
CA550H-F1	41.40	62.00	89.00	8.60	20.00	3.00

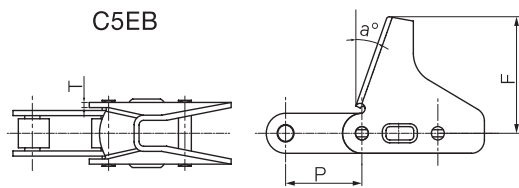
Attachments



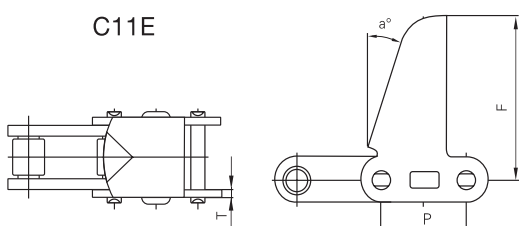
KMC Chain No	P	f	F	H	D	K	T
	mm	mm	mm/max	mm	mm	mm	mm
CA384-K1	38.40	55.00	84.00	14.50	10.50	14.00	3.00



KMC Chain No	P	f	F	H	G	$\phi d3$	T
	mm	mm	mm	mm	mm	mm	mm
CA550-A19	41.40	25.40	38.10	12.70	22.20	6.70	2.70



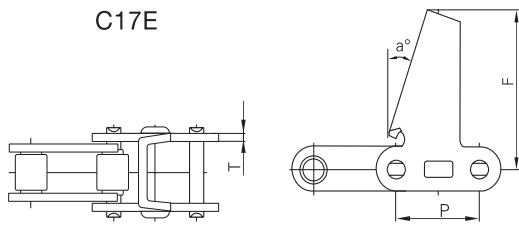
KMC Chain No	P	F	a°	T
	mm	mm/max	°	mm
CA550-C5EB	41.40	59.50	20	2.70



KMC Chain No	P	a°	T	F
	mm	°	mm	mm
CA550-C11E	41.40	15 / 17	2.70	63.50

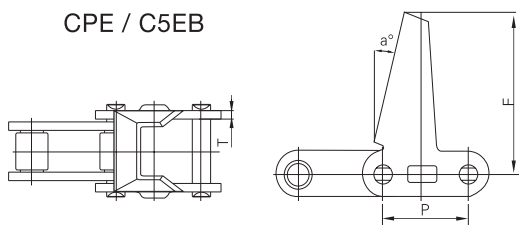
Attachments

C17E



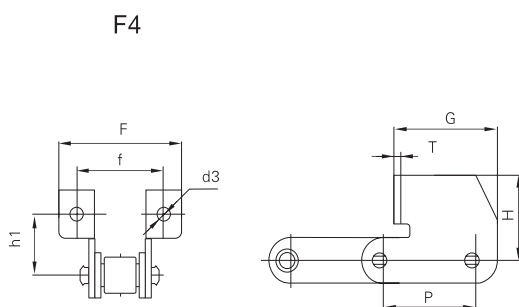
KMC Chain No	P	a°	T	F
	mm	°	mm	mm
CA550-C17E	41,40	19	2,70	76,20

CPE / C5EB



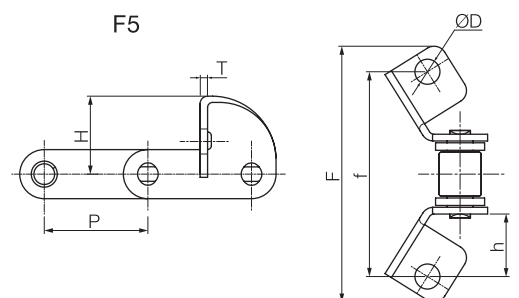
KMC Chain No	P	a°	T	F
	mm	°	mm	mm
CA550-CPE	41,40	10	2,70	63,50
CA550-C5EB	41,40	20	2,70	59,50

F4



KMC Chain No	P	f	F max	h1	H max	T	d3	G
	mm	mm	max	mm	mm	mm	mm	mm
CA550-F4	41,40	47,60	68,30	31,00	42,90	2,70	8,70	36,90

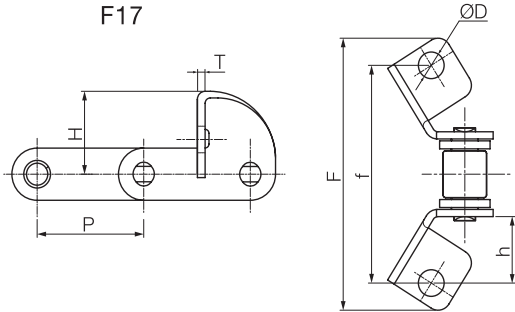
F5



KMC Chain No	P	f	F	H	h	ØD	T
	mm	mm	mm/ max	mm	mm	mm	mm
CA550-F5	41,40	79,20	102,20	31,80	23,40	9,90	2,70
CA550HD-F5	41,40	79,80	98,00	31,80	23,40	9,90	3,00

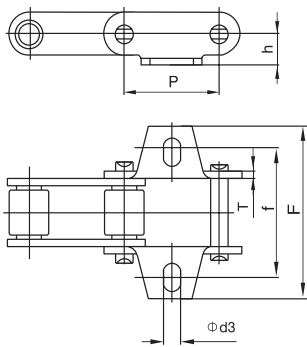
Attachments

F17



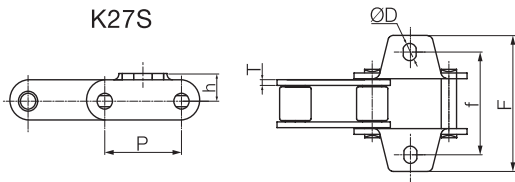
KMC Chain No	P	f	F	H	h	φD	T
	mm	mm	mm/max	mm	mm	mm	mm
CA550H-F17	41.40	116.00	151.80	41.60	41.50	9.90	3.00
CA550HD-F17	41.40	116.00	151.80	41.60	41.50	9.90	3.00

K19



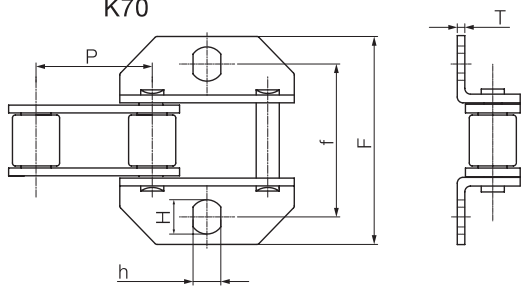
KMC Chain No	P	f	F	h	φd3	T
	mm	mm	mm	mm	mm	mm
CA550-K19	41.40	50.80	71.40	12.70	6.75	2.70

K27S



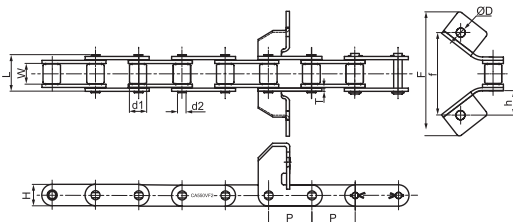
KMC Chain No	P	f	F	h	φD	T
	mm	mm	mm/max	mm	mm	mm
CA550-K27S	41.40	54.00	72.00	13.80	9.95	2.70

K70



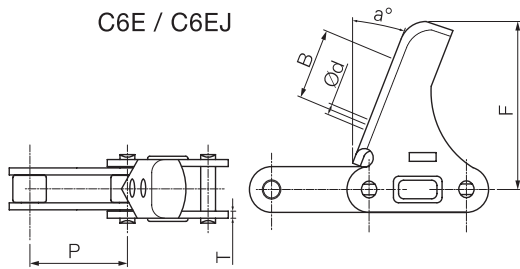
KMC Chain No	P	f	F	h	H	T
	mm	mm	mm/max	mm	mm	mm
CA550-K70	41.40	57.00	79.00	10.00	11.85	2.70

SEF3

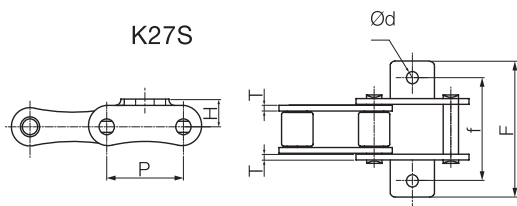


KMC Chain No	P	f	F	h	φD
	mm	mm	mm	mm	mm
CA550VF2-SEF3	41.40	79.50	119.50	26.35	8.70

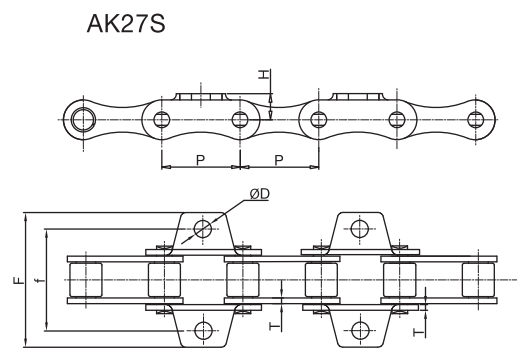
Attachments



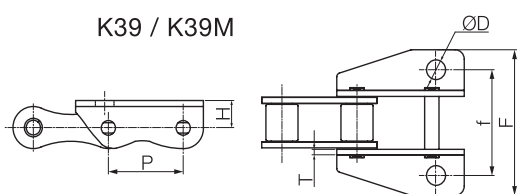
KMC Chain No	P	F	B	a°	Ød	T
	mm	mm/max	mm	°	mm	mm
CA555-C6E	41.40	63.50	25.40	15	6.00	3.20
CA555-C6EJ	41.40	66.10	25.40	15	7.20	3.20



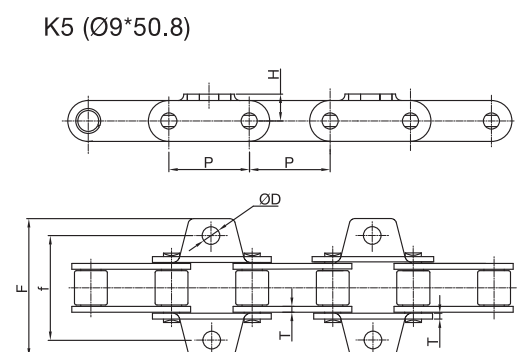
KMC Chain No	P	f	F	Ød	H	T
	mm	mm/max	mm	mm	mm	mm
A557-K27S	41.40	69.25	91.00	13.10	32.00	3.20



KMC Chain No	P	f	F	H	ØD	T
	mm	mm	mm/max	mm	mm	mm
A557-AK27S	41.40	57.20	79.10	14.30	13.10	3.20

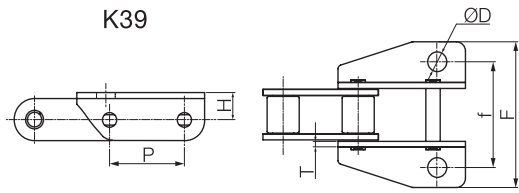


KMC Chain No	P	f	F	H	ØD	T
	mm	mm	mm/max	mm	mm	mm
A557HD-K39	41.40	57.15	73.95	14.60	8.70 10.50	3.20
CA557HD-K39M	41.40	56.70	77.70	13.50	8.70 10.50	3.20

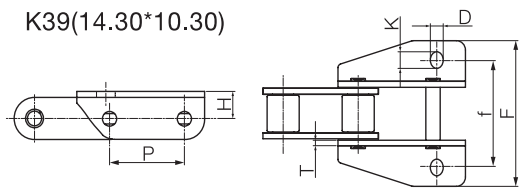


KMC Chain No	P	f	F	H	ØD	T
	mm	mm	mm/max	mm	mm	mm
CA557-K5 (Ø9*50.8)	41.40	50.80	79.15	17.85	9.00	3.20

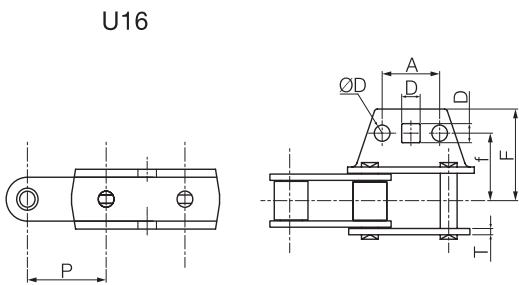
Attachments



KMC Chain No	P	f	F	H	ØD		T
	mm	mm	mm/max	mm	mm		mm
CA557-K39	41.40	57.15	73.55	14.50	8.70	10.50	3.20

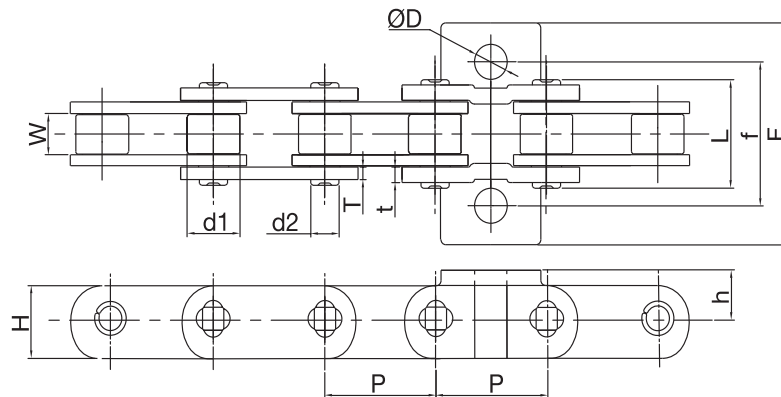


KMC Chain No	P	f	F	H	D	K	T
	mm	mm	mm/max	mm	mm	mm	mm
CA557-K39 (14.30*10.30)	41.40	57.00	79.00	14.00	10.30	14.30	3.20



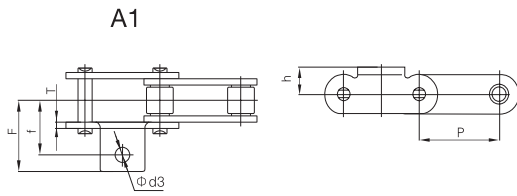
KMC Chain No	P	f	F	ØD	D	A	T
	mm	mm	mm/max	mm	mm	mm	mm
CA557F-U16	41.40	31.90	43.30	8.30	10.00	30.25	3.20

K1

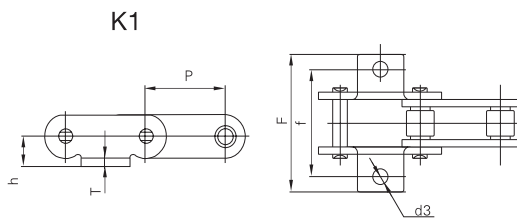


KMC Chain No	Pitch	Roller Link Width	Roller Outer Diameter	Pin Outer Diameter	Pin Length		Link Plate Height	Link Plate Thickness	Minimum Tensile Strength	Average Tensile Strength	K1 Attachment				
	P	W min	d1 max	d2 max	L max	Lc max	H max	T	min		φd	h	f	F	t
	mm	mm	mm	mm	mm	mm	mm	mm	kgf	kgf	mm	mm	mm	mm	mm
CA557HD-K1	41.40	20.60	17.80	8.00	37.40	40.60	22.30	3.20	5600	7500	10.50	15.10	54.10	79.00	4.70

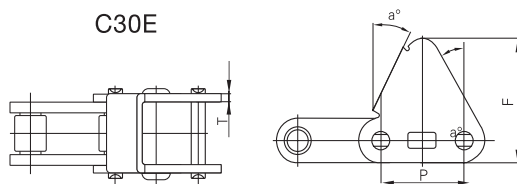
Attachments



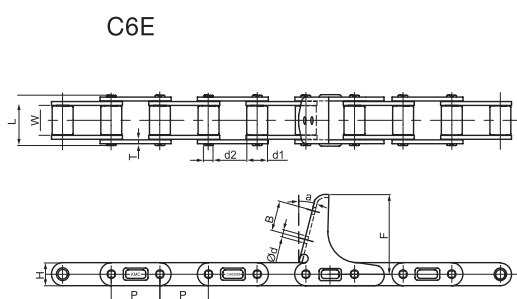
KMC Chain No	P	f	F	h	T	$\Phi d3$
	mm	mm	mm	mm	mm	mm
CA620-A1	42.01	31.40	40.10	11.50	3.20	3.75



KMC Chain No	P	f	F	h	d3	T
	mm	mm	mm	mm	mm	mm
CA620-K1	42.01	62.70	80.20	11.50	6.75	3.20

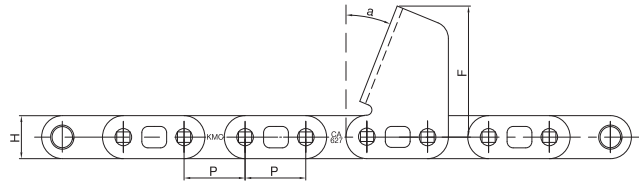
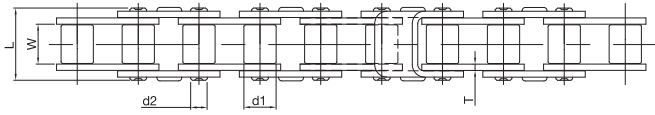


KMC Chain No	P	a°	T	F
	mm	°	mm	mm
CA620-C30E	40.10	22.5	3.20	58.70

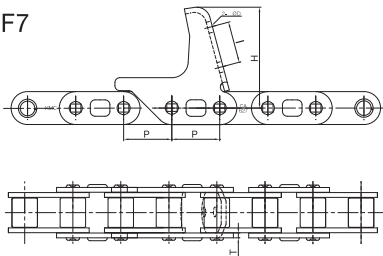


KMC Chain No	P	F	B	a	ΦD
	mm	mm	mm	°	mm
C620MHD-C6E	40.25	66.10	24.00	15	6.00
C620M-C6E	40.25	66.10	24.00	15	6.00

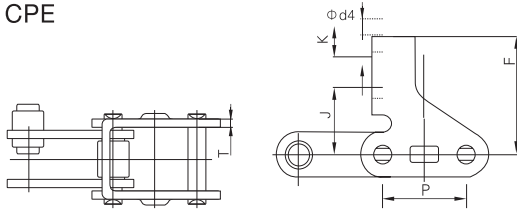
Attachments

CPE


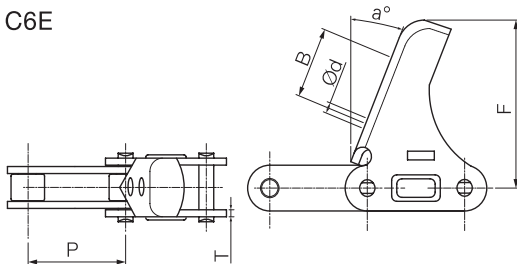
KMC Chain No	Pitch	Roller Link Width	Roller Outer Diameter	Pin Outer Diameter	Pin Length	Link Plate Height	Link Plate Thickness	Minimum Tensile Strength	Average Tensile Strength	C6E Attachment	
	P	W min	d1 max	d2 max	L max	H max	T			F	a
	mm	mm	mm	mm	mm	mm	mm	kgf	kgf	mm	°
CA627-CPE	30.00	19.05	15.88	8.28	36.10	20.50	3.00	5100	5610	62.50	22.50

CPEF7


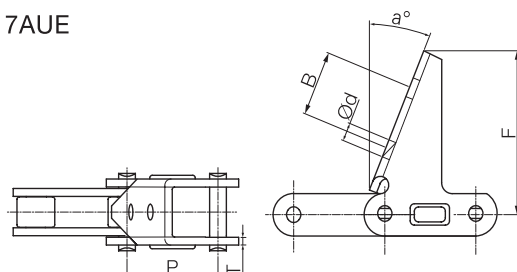
KMC Chain No	P	T	H	I	ΦD
	mm	mm	mm	mm	mm
CA627-CPEF7	30.00	3.00	63.00	25.50	6.50

CPE


KMC Chain No	P	K	J	Φd4	T	F
	mm	mm	mm	mm	mm	mm
C2060H-CPE	38.10	25.40	23.50	5.90	3.20	59.40

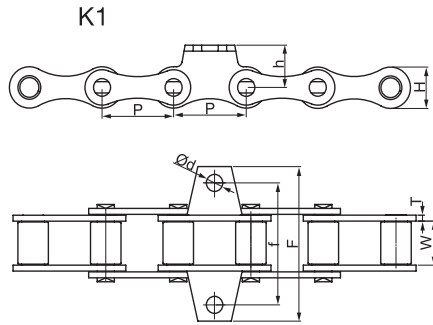
C6E


KMC Chain No	P	F	B	a°	Φd	T
	mm	mm/max	mm	°	mm	mm
CA555-C6E	41.40	63.50	25.40	15	6.00	3.20
C2060H-C6E	38.10	63.50	-	22	-	3.20

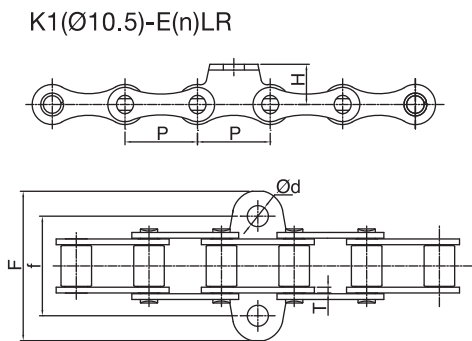
7AUE


KMC Chain No	P	F	B	a°	Φd	T
	mm	mm/max	mm	°	mm	mm
C2060H-7AUE	38.10	63.50	30.00	22	8.50	3.20

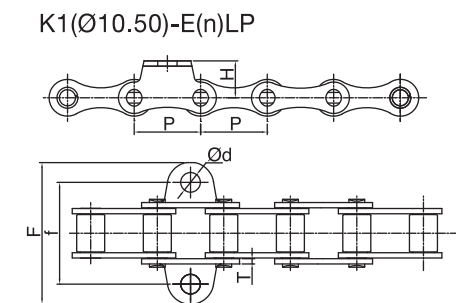
Attachments



KMC Chain No	P	T	H(MAX)	W(min)	ΦD	h	f	F
	mm	mm	mm	mm	mm	mm	mm	mm
S38-K1	38.00	3.00	20.90	22.00	8.60	21.00	52.00	78.00



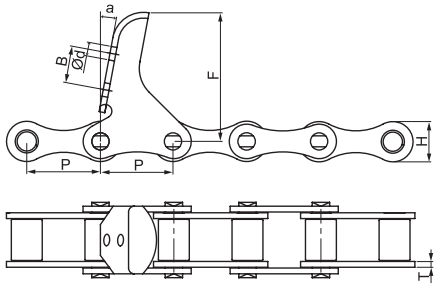
KMC Chain No	P	T	Ød	H	f	F
	mm	mm	mm	mm	mm	mm
S38-K1(Ø10.5)-E(n)LR	38.00	3.00	10.50	20.00	52.00	78.00



KMC Chain No	P	T	Ød	H	f	F
	mm	mm	mm	mm	mm	mm
S38-K1(Ø10.5)-E(n)LP	38.00	3.00	10.50	20.00	58.00	80.50

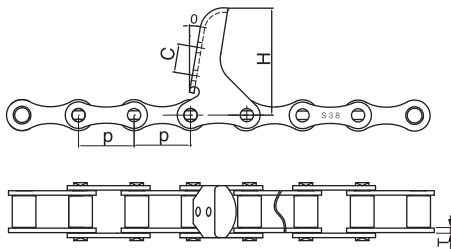
Attachments

C6E



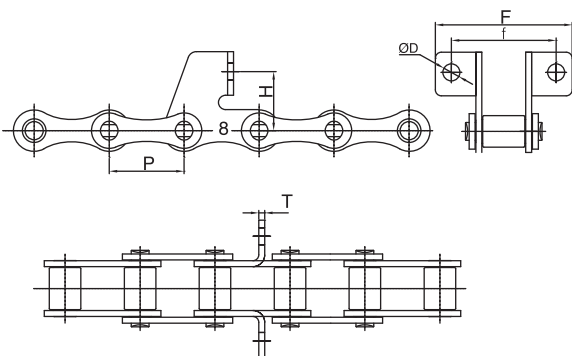
KMC Chain No	P	T	H(MAX)	F	a	φD	B
	mm	mm	mm	mm	°	mm	mm
S38-C6E	38.00	3.00	20.90	66.50	15	8.60	19.10

C6EJ(72)



KMC Chain No	P	T	H	o	C
	mm	mm	mm	°	mm
S38-C6EJ(72)	38.00	3.00	72.00	10	24.00

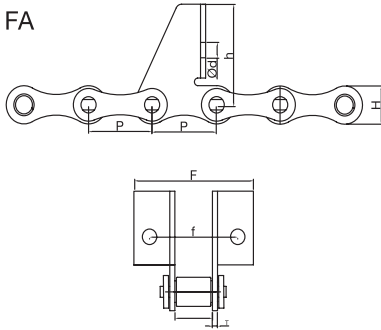
F1



KMC Chain No	P	f	F	φD	H	T
	mm	mm	mm/Max	mm	mm	mm
S38-F1(Ø8.50)	38.00	52.00	73.00	8.50	30.00	3.00
S38-F1(Ø6.50)	38.00	52.00	73.00	6.50	30.00	3.00

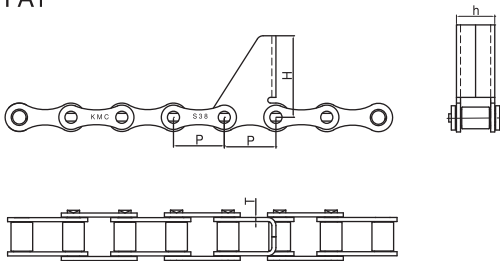
Attachments

FA



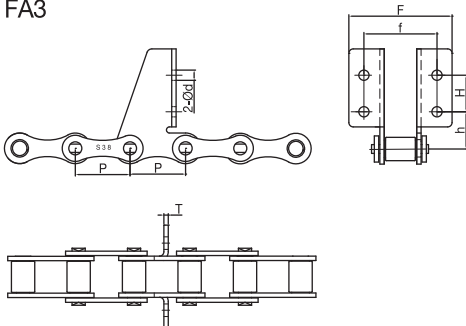
KMC Chain No	Pitch	Roller Link Width	Link Plate Height	Link Plate Thickness	F1 Attachment			
	P	W min	H max	T	ϕd	h	f	F
	mm	mm	mm	mm	mm	mm	mm	mm
S38-FA	30.00	22.00	20.90	22.00	8.60	55.10	52.00	70.60

FA1



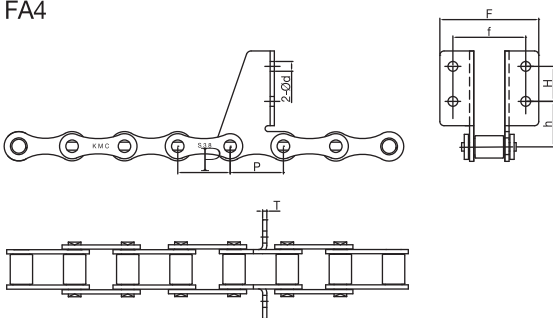
KMC Chain No	P	T	H	h
	mm	mm	mm	mm
S38-FA1	38.00	3.00	60.00	28.00

FA3



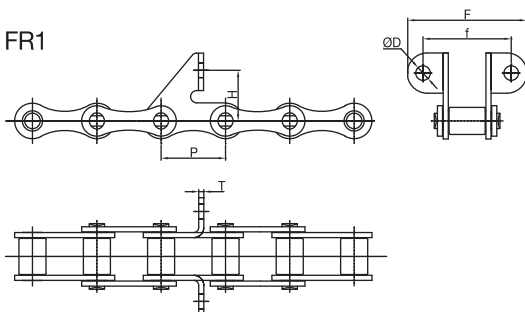
KMC Chain No	P	T	ϕD	h	H	f	F
	mm	mm	mm	mm	mm	mm	mm
S38-FA3	38.00	3.00	7.00	25.00	25.00	50.00	70.60

FA4



KMC Chain No	P	T	ϕD	h	H	f	F
	mm	mm	mm	mm	mm	mm	mm
S38-FA4	38.00	3.00	7.00	32.00	25.00	52.00	70.60

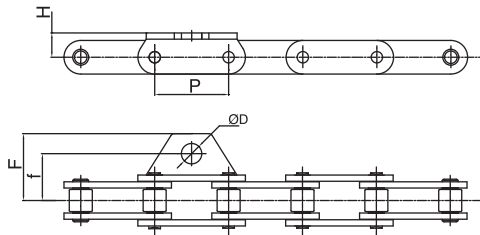
FR1



KMC Chain No	P	f	F	ϕD	H	T
	mm	mm	mm/Max	mm	mm	mm
S38-FR1($\phi 8.50$)	38.00	52.00	73.00	8.50	30.00	3.00
S38-FR1($\phi 6.50$)	38.00	52.00	73.00	6.50	30.00	3.00

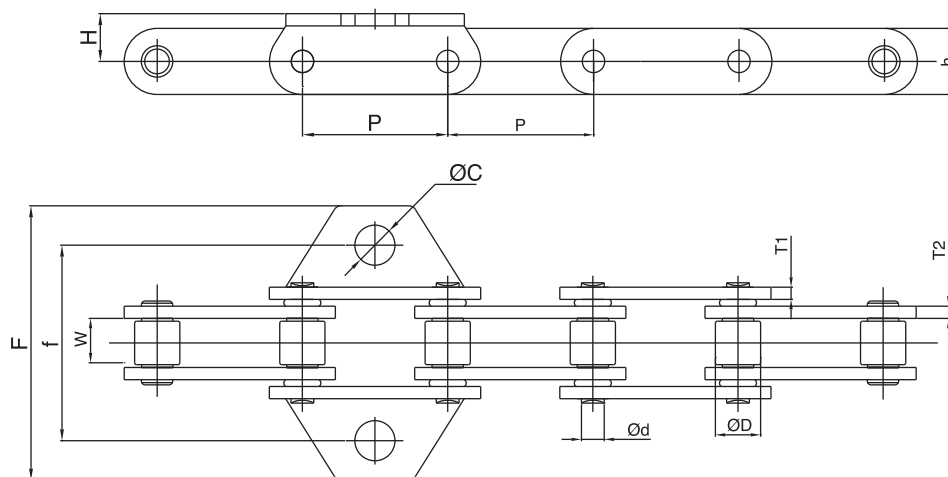
Attachments

A1(Ø8.5)



KMC Chain No	P	f	F	ΦD	H	T
	mm	mm	mm/Max	mm	mm	mm
C2060-A1(Ø8.5)	38.10	23.00	33.50	8.50	14.30	2.35

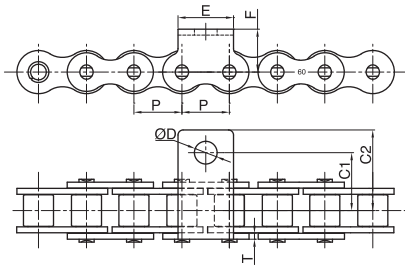
K1



KMC Chain No	P	W	T1	T2	ΦD	Φd	f	F	ΦC	H
	mm	mm	mm	mm	mm	mm	mm	mm/Max	mm	mm
C2060RO-K1(Ø8.5*42.9)	38.10	12.57	2.35	2.35	11.91	5.96	42.90	64.20	8.50	14.30
C2060RO-K1(Ø10.5*48.0)	38.10	12.57	2.35	2.35	11.91	5.96	48.00	64.20	10.50	14.30
C2060HRO-K1(Ø8.5*42.9)	38.10	12.57	3.20	3.20	11.91	5.96	42.90	69.10	8.50	14.30
C2060HRO-K1(Ø10.5*48.0)	38.10	12.57	3.20	3.20	11.91	5.96	48.00	69.10	10.50	14.30

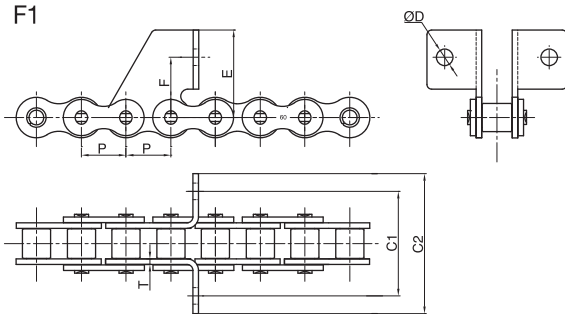
Attachments

1PA1



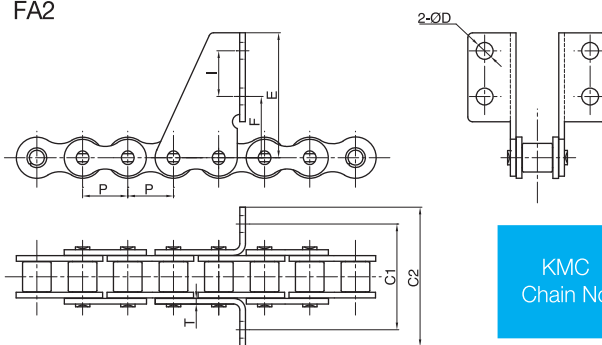
KMC Chain No	P	T	F	E	ΦD	C1	C2
	mm	mm	mm	mm	mm	mm	mm
60-1PA1	19.05	2.35	17.00	22.00	9.00	23.00	32.00

F1



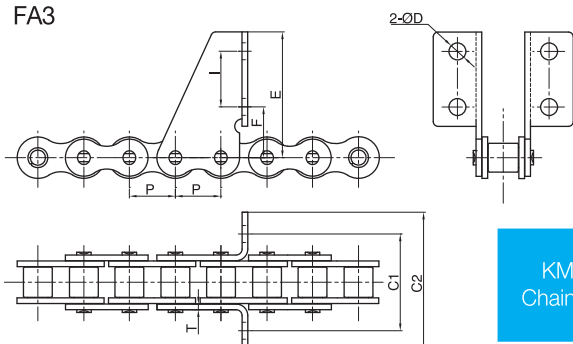
KMC Chain No	P	T	F	E	ΦD	C1	C2
	mm	mm	mm	mm	mm	mm	mm
60-F1	19.05	2.35	25.50	37.00	7.00	44.00	59.00

FA2



KMC Chain No	P	T	F	E	ΦD	C1	C2	I
	mm	mm	mm	mm	mm	mm	mm	mm
60-FA2	19.05	2.35	25.50	52.00	7.00	44.00	58.00	19.00

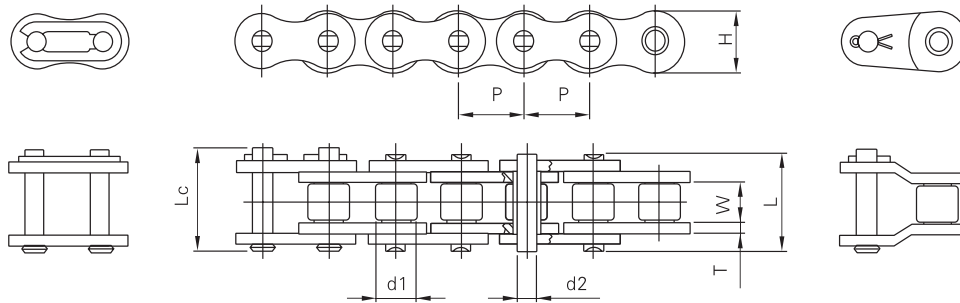
FA3



KMC Chain No	P	T	F	E	ΦD	C1	C2	I
	mm	mm	mm	mm	mm	mm	mm	mm
60-FA3	19.05	2.35	21.00	52.00	7.00	38.00	58.00	19.00

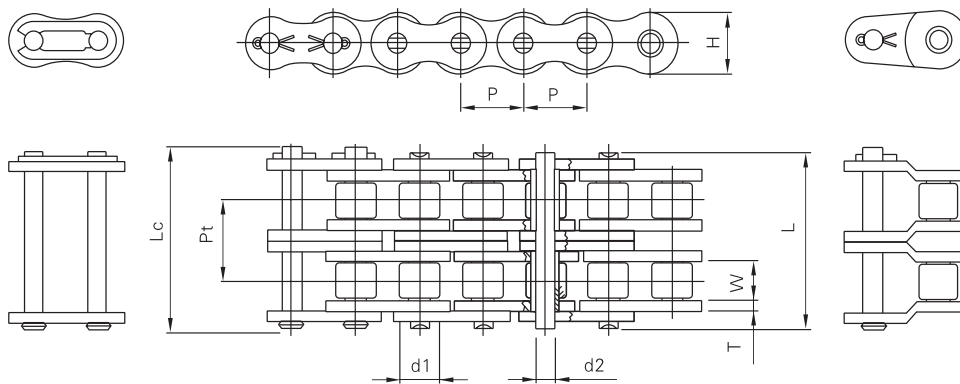
A Series Standard Roller Chain

Single strand roller & bushing chain



ISO Chain No	ANSI Chain No	KMC Chain No	Pitch	Roller Link Width	Roller Outer Diameter	Pin Outer Diameter	Pin Length		Link Plate Height	Link Plate Thickness	Minimum Tensile Strength	Average Tensile Strength	Allowed Load
			P	W min	d ₁ max	d ₂ max	L max	Lc max	H max	T			max
			mm	mm	mm	mm	mm	mm	mm	mm	mm	kgf	kgf
084		415H	12.70	4.68	7.77	4.00	13.30	15.00	12.00	1.50	1610	1850	380
085	41	41	12.70	4.68	7.77	4.00	13.30	15.00	12.00	1.50	1610	1850	380
08A	40	40	12.70	7.85	7.92	3.98	17.80	21.00	12.00	1.50	1420	1950	370
10A	50	50	15.875	9.40	10.16	5.09	21.80	25.00	15.00	2.00	2220	3000	650
12A	60	60	19.05	12.58	11.91	5.96	26.90	31.00	18.00	2.35	3190	4100	920
16A	80	80	25.40	15.75	15.87	7.94	33.50	38.00	24.10	3.20	5680	7500	1500

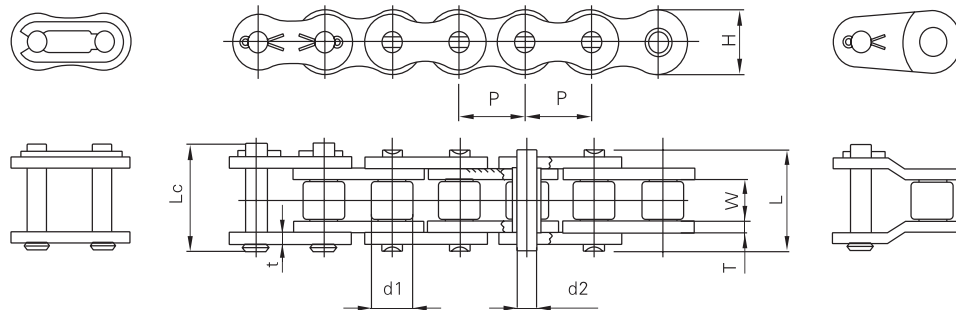
Double strand roller & bushing chain



ISO Chain No	ANSI Chain No	KMC Chain No	Pitch	Roller Link Width	Roller Outer Diameter	Pin Outer Diameter	Pin Length		Link Plate Height	Link Plate Thickness	Minimum Tensile Strength	Average Tensile Strength	Allowed Load	Transverse Pitch Of Strand
			P	W min	d ₁ max	d ₂ max	L max	Lc max	H max	T			max	Pt
			mm	mm	mm	mm	mm	mm	mm	mm	mm	kgf	kgf	kgf
08A-2	40-2	40-2	12.70	7.85	7.92	3.98	32.30	36.20	12.00	1.50	2840	3900	630	14.38
10A-2	50-2	50-2	15.875	9.40	10.16	5.09	39.90	44.00	15.00	2.00	4440	6200	1100	18.11
12A-2	60-2	60-2	19.05	12.58	11.91	5.96	49.80	54.40	18.00	2.35	6380	8400	1530	22.78
16A-2	80-2	80-2	25.40	15.75	15.87	7.94	62.70	68.10	24.10	3.20	11360	15000	2550	29.29

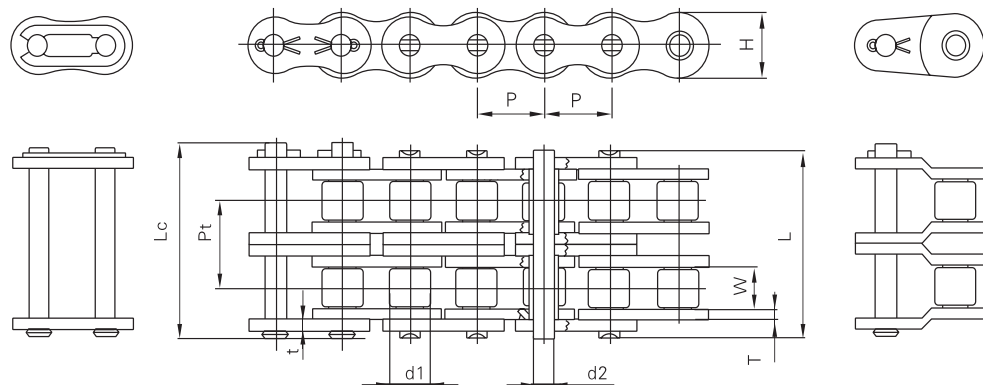
B Series Standard Roller Chain

Single strand roller chain



ISO Chain No	KMC Chain No	Pitch	Roller Link Width	Roller Outer Diameter	Pin Outer Diameter	Pin Length		Link Plate Height	Link Plate Thickness	Minimum Tensile Strength	Average Tensile Strength
		P	W min	d ₁ max	d ₂ max	L max	Lc max	H max	T/t		
		mm	mm	mm	mm	mm	mm	mm	mm	kgf	kgf
06B	06B	9.525	5.72	6.35	3.28	13.50	16.80	8.20	1.40/1.10	910	1100
08B	08B	12.70	7.75	8.51	4.45	17.00	20.70	11.80	1.50	1820	1950
10B	10B	15.875	9.65	10.16	5.08	19.60	23.70	14.70	1.70	2270	2800
12B	12B	19.05	11.68	12.07	5.72	22.70	27.30	16.10	1.80	2950	3350
16B	16B	25.40	17.02	15.88	8.28	36.10	41.50	21.00	4.00/3.00	6130	7500

Double strand roller chain



ISO Chain No	KMC Chain No	Pitch	Roller Link Width	Roller Outer Diameter	Pin Outer Diameter	Pin Length		Link Plate Height	Link Plate Thickness	Minimum Tensile Strength	Average Tensile Strength	Transverse Pitch Of Strand
		P	W min	d ₁ max	d ₂ max	L max	Lc max	H max	T/t			Pt
		mm	mm	mm	mm	mm	mm	mm	mm	mm	kgf	kgf
06B-2	06B-2	9.525	5.72	6.35	3.28	23.80	27.10	8.20	1.40/1.10	1730	1900	10.24
08B-2	08B-2	12.70	7.75	8.51	4.45	31.00	34.90	11.80	1.50	3180	3850	13.92
10B-2	10B-2	15.875	9.65	10.16	5.08	36.20	40.30	14.70	1.70	4550	5600	16.59
12B-2	12B-2	19.05	11.68	12.07	5.72	42.20	46.80	16.10	1.80	5900	6500	19.46
16B-2	16B-2	25.40	17.02	15.88	8.28	68.00	73.40	21.00	4.00/3.00	10820	15000	31.88

AMazing power transmission.

KMC (HEADQUARTER)

KMC POWER TRANSMISSION CO., LTD.
9F-2, No.12, Zhonghua Rd., Yongkang Dist.,
Tainan City 710, Taiwan
Tel.: + 886-6-311 3166
Fax: + 886-6-312 8266
E-mail: sales@amgroup.tw

KMC (CHINA)

DONGGUAN TRANSTON CHAIN CO., LTD.
No.23 Xinyuan S. Rd., Shahu Village, Tangxia Town,
Dongguan City, Guangdong Province, China
Tel.: + 86-769-82008808
Fax: + 86-769-82008800

KMC (CHINA)

KMC CHAIN (TAICANG) CO., LTD.
No. 165 Zhenghe Middle Rd., Ludu Town, Taicang City,
Jiangsu Province, China
Tel.: +86-512-5345 7988
Fax: +86-512-5345 0286

KMC (CHINA)

CHONGQING TRANSTON CHAIN CO., LTD.
No.2 Xinfang Rd., Area B, Luohuang Industrial Zone,
Jiangjin Dist., Chongqing City, China
Tel.: +86-23-4763 7728
Fax: +86-23-4763 7726

