

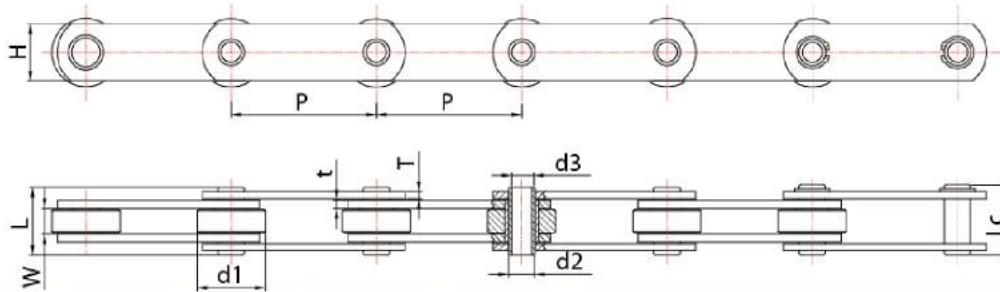
# Palm oil Chain



[www.kmcgroup.com.tw](http://www.kmcgroup.com.tw)

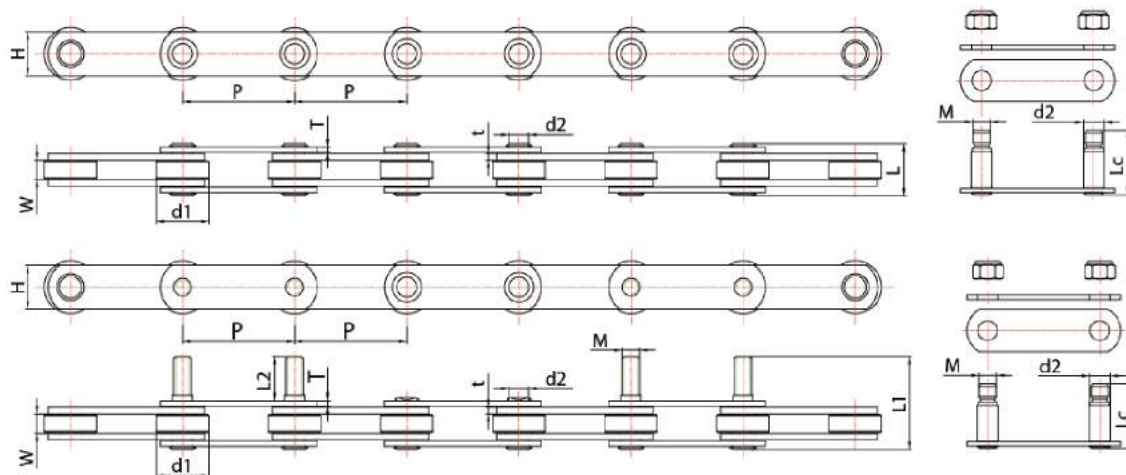
# Palm Oil Conveyor Chain

## Hollow Bearing Pin



KMC Chain No	Pitch	Roller Link Width	Roller Outer Diameter	Pin Outer Diameter	Pin Length			Link Plate Height	Link Plate Thickness	Minimum Tensile Strength
	P	W (Min)	d1 (Max)	d2	d3	L (Max)	Lc (Max)	H (Max)	T/t	Min
	mm	mm	mm	mm	mm	mm	mm	mm	mm	kgf(lbf)
04024KOR HP	101.60	19.00	47.60	19.05	13.20	45.50	47.50	41.00	4.10/5.10	10640 (23500)
06036KOR HP	152.40	25.40	66.70	27.00	20.10	59.80	63.00	51.80	5.25/7.25	22700 (36000)

## Solid Bearing Pin



KMC Chain No	Pitch	Roller Link Width	Roller Outer Diameter	Pin Outer Diameter	Pin Length			Extended pin length	Link Plate Height	Link Plate Thickness	Lock nut	Minimum Tensile Strength
	P	W (Min)	d1 (Max)	d2	L (Max)	L1 (Max)	Lc (Max)	L2	H (Max)	T/t	M	Min
	mm	mm	mm	mm	mm	mm	mm	mm	mm	mm	/	kgf(lbf)
04024KOR	101.60	19.00	47.60	19.00	45.50	/	58.80	/	41.00	4.10/5.10	M16	10640 (23500)
06040KOR	152.40	25.40	66.70	27.00	59.80	/	77.00	/	51.80	5.25/7.25	M22	18160 (40000)
06050KOR	152.40	25.40	66.70	27.00	59.80	/	77.00	/	51.80	5.25/7.25	M22	22700 (50000)
04024KOR-D3	101.60	19.00	47.60	19.00	45.50	83.20	58.80	40.00	41.00	4.10/5.10	M16	10640 (23500)
06040KOR-D3	152.40	25.40	66.70	27.00	59.80	110.00	77.00	52.20	51.80	5.25/7.25	M22	18160 (40000)
06050KOR-D3	152.40	25.40	66.70	27.00	59.80	110.00	77.00	52.20	51.80	5.25/7.25	M22	22700 (50000)